

# Audi A4

## Current Flow Diagram

**No. 40 / 1**

Edition 04.2006

### **Seat heating, steering wheel heater**

from September 2003

**Notes:**

For information concerning

- ◆ Position of relays and fuses
- ◆ Multi-pin connections
- ◆ Control units and relays
- ◆ Earth connections

→ List of Fitting Locations!

For information concerning

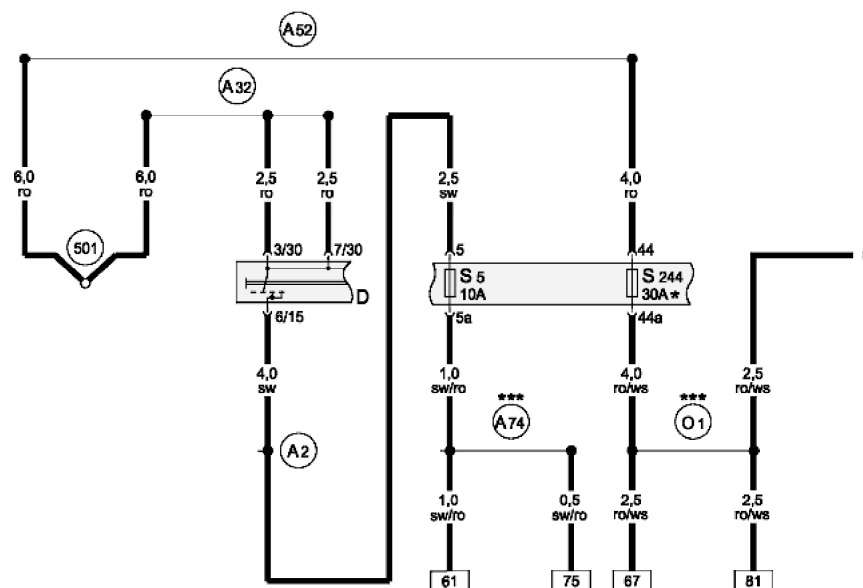
- ◆ Fault Finding Programs

→ guided fault finding

## Audi A4

## Current Flow Diagram

No. 40 / 2



ws = white  
 sw = black  
 ro = red  
 br = brown  
 gn = green  
 bl = blue  
 gr = grey  
 li = purple  
 ge = yellow  
 or = orange  
 rs = pink

## Fuses

- D - Ignition/starter switch
- S5 - Fuses in relay plate fuse holder
- S244 - Fuse in fuse holder
- 501 - Screw connection 2 (30), on relay plate
- A2 - Positive connection (15), in dash panel wiring harness
- A32 - Positive connection (30), in dash panel wiring harness
- A52 - Positive connection 2 (30), in dash panel wiring harness
- A74 - Connection (15a, fuse 5), in dash panel wiring harness
- O1 - Positive connection (30), in seat heating wiring harness
- \* - Fuse was increased from 30 A to 35 A, applicable from model year 2006
- \*\*\* - for models with heated rear seats only

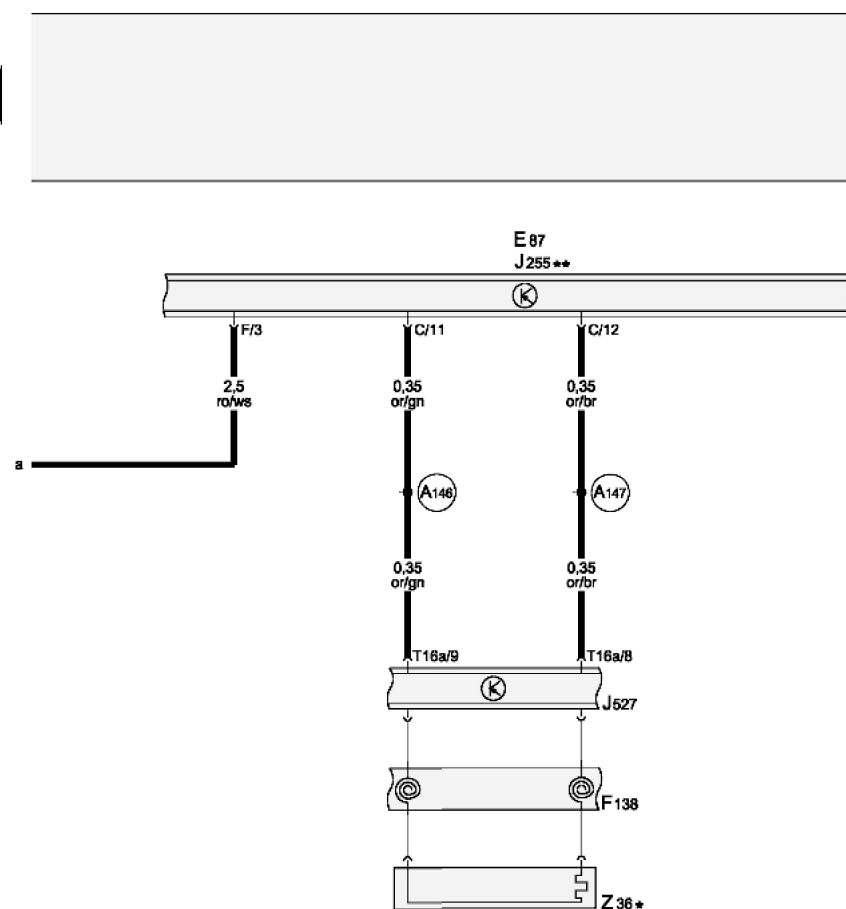
1 2 3 4 5 6 7 8 9 10 11 12 13 14

8ED-040020406


## Audi A4

## Current Flow Diagram

No. 40 / 3



### Heated steering wheel

- E87** - Operating and display unit for air conditioning system/Climatronic
- F138** - Airbag coil connector and return spring with slip ring
- J255** - Climatronic control unit
- J527** - Steering column electronics control unit 
- T16a** - 16-pin connector, black, on steering column electronics control unit
- Z36** - Heated steering wheel
- A146** - Connection (convenience CAN bus, high), in dash panel wiring harness
- A147** - Connection (convenience CAN bus, low), in dash panel wiring harness
- \*** - for models with heated steering wheel only
- \*\*** - applicable from August 2004

ws = white  
 sw = black  
 ro = red  
 br = brown  
 gn = green  
 bl = blue  
 gr = grey  
 li = purple  
 ge = yellow  
 or = orange  
 rs = pink

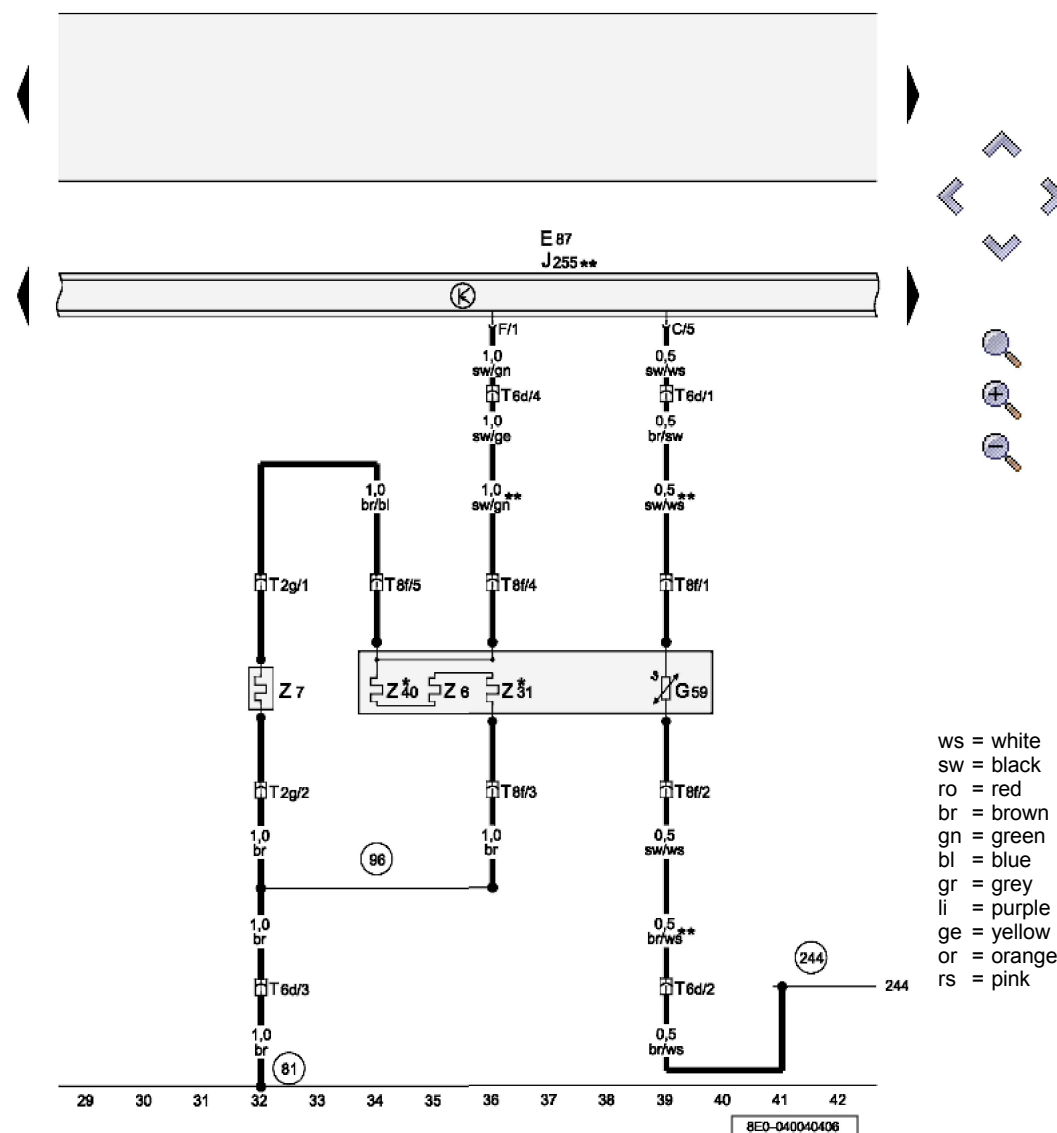
15 16 17 18 19 20 21 22 23 24 25 26 27 28

8ED-040030406

## Audi A4

## Current Flow Diagram

No. 40 / 4

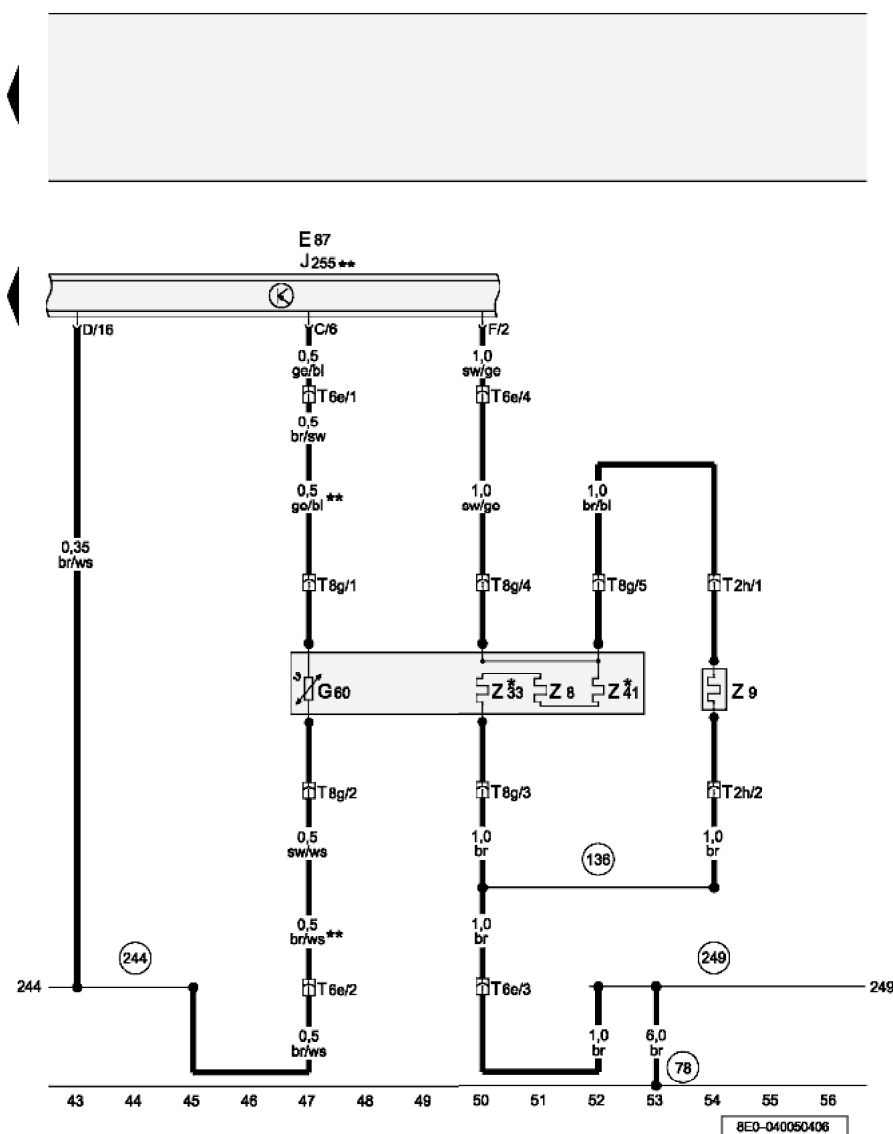
**Heated driver seat cushion**

- E87 - Operating and display unit for air conditioning system/Climatronic
- G59 - Driver seat temperature sensor
- J255 - Climatronic control unit
- T2g - 2-pin connector, on driver seat for heated driver seat backrest
- T6d - 6-pin connector, green, coupling station seat wiring, driver seat
- T8f - 8-pin connector, on driver seat for heated driver seat
- Z6 - Heated driver seat cushion
- Z7 - Heated driver seat backrest
- Z31 - Driver seat cushion lateral support heater
- Z40 - Driver seat lateral support heater 2
- 81 - Earth connection 1, in dash panel wiring harness
- 96 - Earth connection 1, in seat heating wiring harness
- 244 - Earth connection (sender earth), in Climatronic wiring harness
- \* - only for models with seat lateral support heater
- \*\* - applicable from August 2004


## Audi A4

## Current Flow Diagram

No. 40 / 5



### Heated front passenger seat cushion

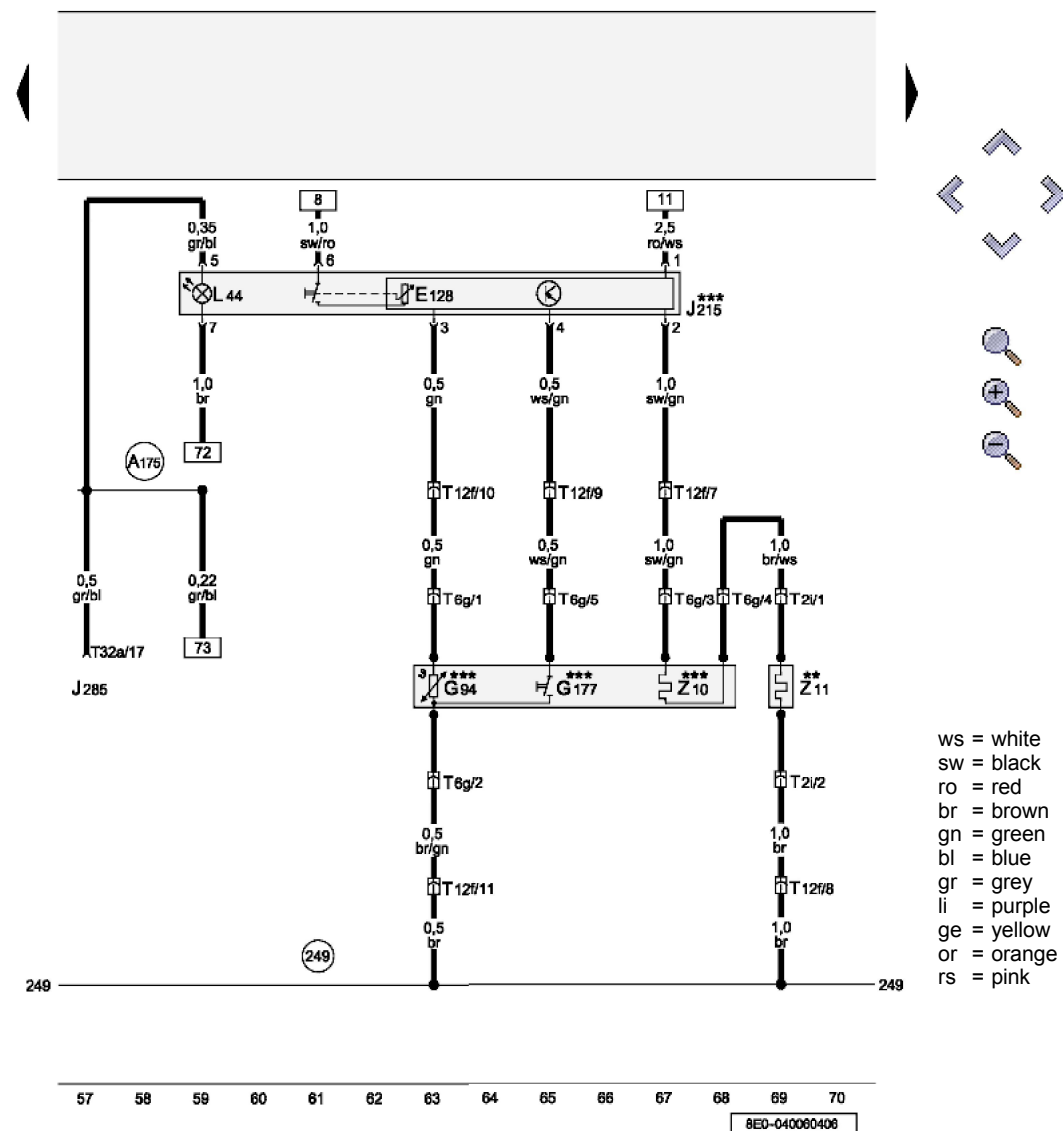
- E87 - Operating and display unit for air conditioning system/Climatronic
- G60 - Front passenger seat temperature sensor
- J255 - Climatronic control unit
- T2h - 2-pin connector, on front passenger seat for heated front passenger seat backrest
- T6e - 6-pin connector, green, coupling station seat wiring, front passenger seat
- T8g - 8-pin connector, on front passenger seat for heated front passenger seat
- Z8 - Heated front passenger seat cushion
- Z9 - Heated front passenger seat backrest
- Z33 - Front passenger seat lateral support heater
- Z41 - Front passenger seat lateral support heater 2
- 78 - Earth point, lower part of right B-pillar 
- 136 - Earth connection 2, in seat heating wiring harness
- 244 - Earth connection (sender earth), in Climatronic wiring harness
- 249 - Earth connection 2, in interior wiring harness
- \* - only for models with seat lateral support heater
- \*\* - applicable from August 2004

ws = white  
 sw = black  
 ro = red  
 br = brown  
 gn = green  
 bl = blue  
 gr = grey  
 li = purple  
 ge = yellow  
 or = orange  
 rs = pink

## Audi A4

## Current Flow Diagram

No. 40 / 6



## Heated rear left seat

- E128 - Heated rear left seat switch with regulator
- G94 - Rear left seat temperature sensor
- G177 - Rear seat occupied sensor on driver side
- J215 - Heated rear left seat control unit
- J285 - Control unit in dash panel insert
- L44 - Seat heating switch illumination bulb
- T2i - 2-pin connector, heated rear left seat backrest
- T6g - 6-pin connector, on rear left seat
- T12f - 12-pin connector, black, under rear seat bench
- T32a - 32-pin connector, green, on dash panel insert
- Z10 - Heated rear left seat
- Z11 - Heated rear left seat backrest
- 249 - Earth connection 2, in interior wiring harness

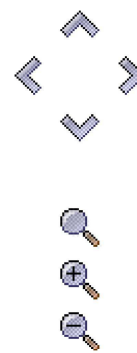
A175 - Connection (58s), in dash panel wiring harness

\*\*\* - for models with heated rear seats only

## Audi A4

## Current Flow Diagram

No. 40 / 7



- E129 - Heated rear right seat switch with regulator
- G95 - Rear right seat temperature sensor
- G178 - Rear seat occupied sensor on front passenger side
- J216 - Heated rear right seat control unit
- L44 - Seat heating switch illumination bulb
- T2j - 2-pin connector, heated rear right seat backrest
- T6h - 6-pin connector, on rear right seat
- T12f - 12-pin connector, black, under rear seat bench
- Z12 - Heated rear right seat
- Z13 - Heated rear right seat backrest
- 249 - Earth connection 2, in interior wiring harness

- \*\* - applicable from August 2004
- \*\*\* - for models with heated rear seats only

ws = white  
sw = black  
ro = red  
br = brown  
gn = green  
bl = blue  
gr = grey  
li = purple  
ge = yellow  
or = orange  
rs = pink