

$F_n$	$M_x$	$M_y$
18435 N	14980 Nm	17222 Nm

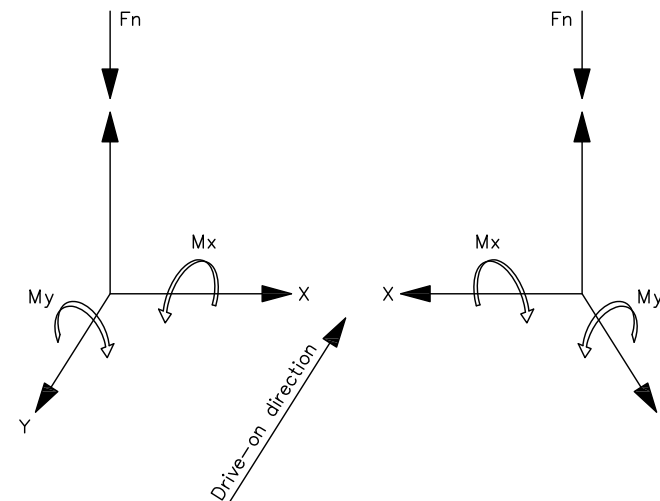
Note !  
Forces and moments are stated per post.

If the lift is to be installed on an existing floor the capacity of the foundation has to be checked by the building owner.

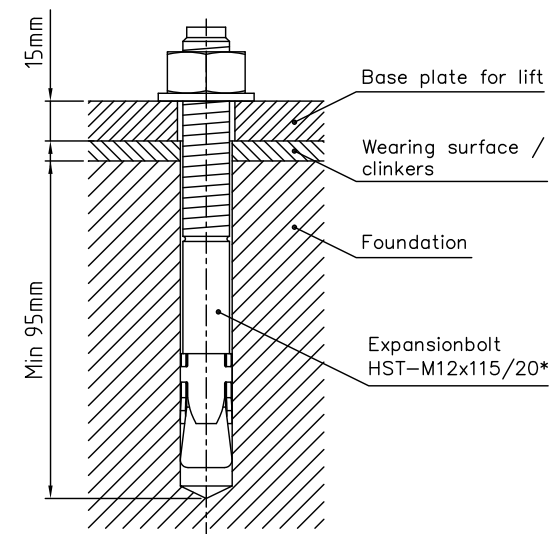
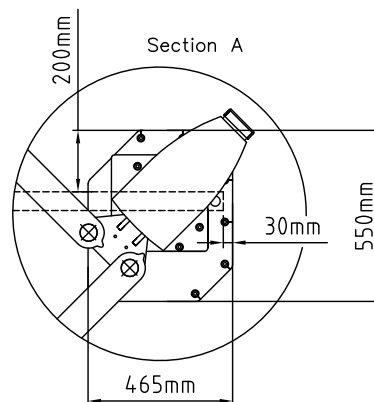
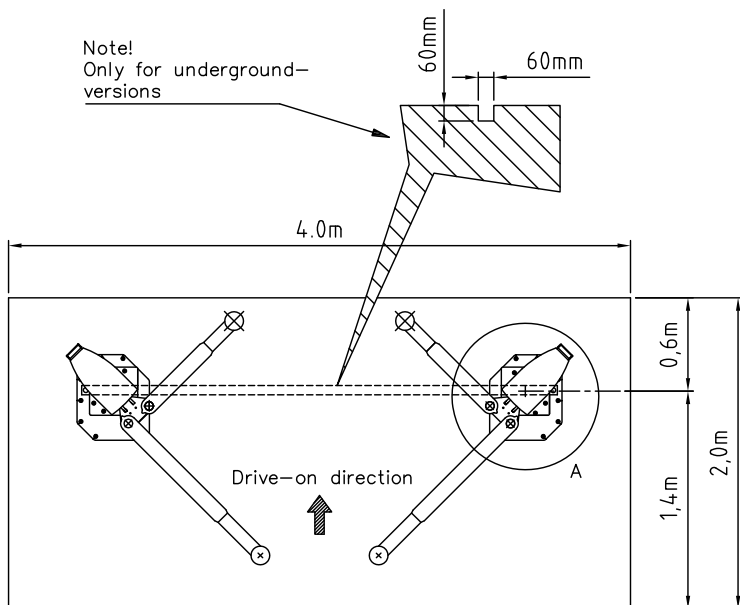
All measures must be checked when the floor is concreted.

Power supply:  
Power 400Vac/3/50Hz  
+N, +PE, 16A, 2x1,5kW

Foundation:  
Minimum thickness without wearing surface:  
min. 160mm  
Quality of concrete: C20/25 (EN206-1).  
The forces and moments must be safely dissipated by on-site measures under observance of the local conditions.  
THE SPECIFICATIONS OF THE RESPONSIBLE STRUCTURAL ENGINEER ARE AUTHORITATIVE.



Note!  
Only for underground-versions



\*) If alternative attachment is used the properties of this attachment must correspond to the Hilti bolt mentioned.

Date: 120813 Sign. LJE

STENHØJ A/S  
E-mail: info@stenhoj.dk  
FAX: +45 76 82 13 31



**STENHØJ**

Nr. T81756

Foundation  
Maestro 2.32

Rev. date: