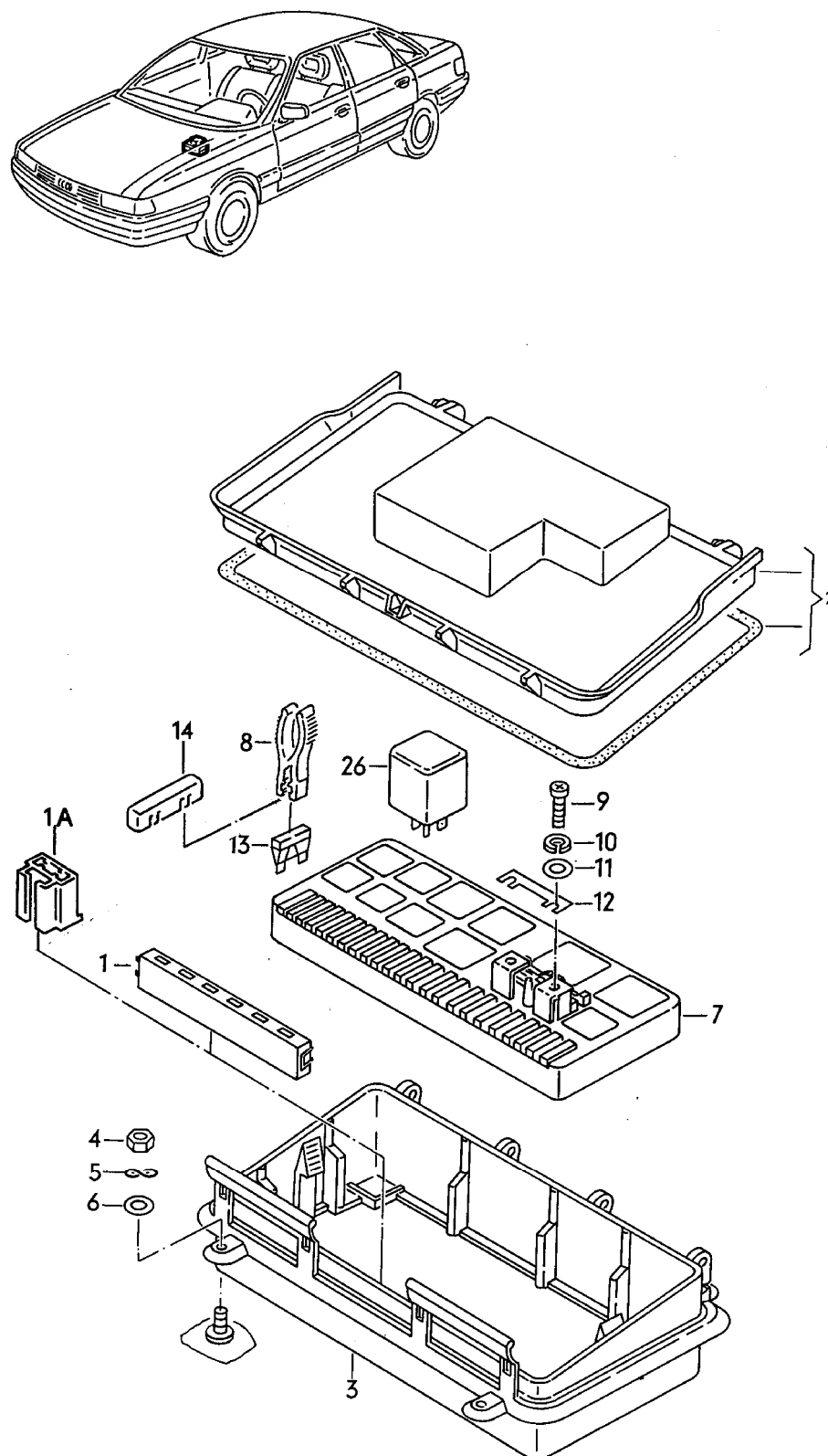




ETKA

Model	Year	MG	SG	Illustration	Restrictions	UPD	21:37	15.05.2015
RS2	1995	9	37	937-025		1066		





Audi

ETKA

Model	Year	MG	SG	Illustration	Restrictions	UPD	21:37	15.05.2015
RS2	1995	9	37	937-025		1066		

Pos	Part Number	Description	Remark	Qty	Model
		central electrics relay			
1A	4B0 937 530	fuse adaptor	2 pin	X	
2	8A0 941 801	cover		1	
-		type plates see illustration:	011-10		
3	8A0 941 803	housing for centr. elec.system		1	
4	N 011 006 36	hexagon nut	M6	4	
5	N 012 226 5	spring washer	6	4	
6	N 011 557 2	washer	6,4X11X1,6	4	
7	443 941 822 A	central electrics		1	
8	8D0 941 802	assembly tool for blade fuse		1	
13	N 017 131 16	flat fuse 19/2x5	5a -lt brown-	X	
(13)	N 017 131 18	flat fuse 19/2x5	7.5a -brown-	X	
(13)	N 017 131 11	flat fuse 19/2x5	10a -red-	X	
(13)	N 017 131 12	flat fuse 19/2x5	15a -lt blue-	X	
(13)	N 017 131 23	flat fuse 19/2x5		X	
(13)	N 017 131 14	flat fuse 19/2x5	25a -cl.glass-	X	
(13)	N 017 131 15	flat fuse 19/2x5	30a-lt green-	X	
-	357 998 131 A	1 set of flat fuses		X	
14	893 941 819	cover		1	
26	8D0 951 253 A	relay for fog lamp relay location/code no.: to be used for code no.: F >> 8C-R-001 000	/373 1	1	
(26)	7M0 951 253 A	contact close relay relay location/code no.: to be used for code no.:	35A /100 /2/373	1	
(26)	8D0 951 253 A	relay relay location/code no.: to be used for code no.:	35A /373 /3	1	
(26)	443 955 535	relay for headlight washer relay location:	4	1	



Audi

ETKA

Model	Year	MG	SG	Illustration	Restrictions	UPD	21:37	15.05.2015
RS2	1995	9	37	937-025		1066		

Pos	Part Number	Description	Remark	Qty	Model
(26)	8D0 951 253	relay for relief relay x contact relay location/code no.: to be used for code no.:	50A /370 /5	1	
(26)	8D0 951 253 A	relay for radiator fan for vehicles with electroni- cally regulated air condit. relay location/code no.: to be used for code no.:	35A /373 /6	1	
(26)	8D0 951 253 A	relay for vehicles with anti-theft alarm system relay location/code no.: to be used for code no.:	 /373 8	1	
(26)	191 955 531	control unit for wiper/washing automatic intervals relay location:	 9	1	
(26)	4D0 951 253	contact close relay for fuel pump relay location/code no.: to be used for code no.:	 10/372 208	1	
(26)	8D0 951 253 A	relay for radiator fan relay location/code no.: to be used for code no.:	35A /373 /11	1	