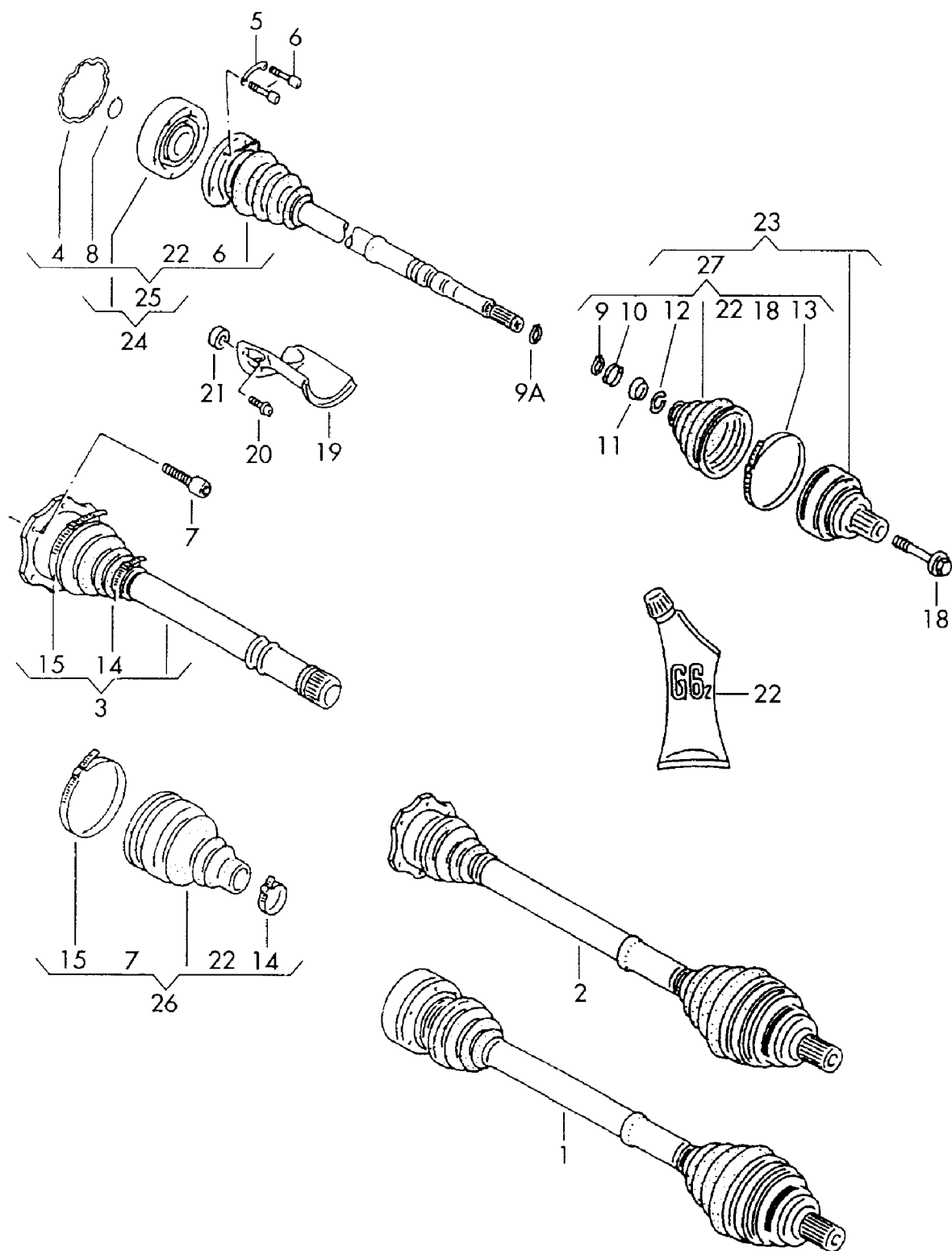




Audi

# ETKA

Model	Year	MG	SG	Illustration	Restrictions	UPD	19:25	11.08.2014
A6Q	2001	4	07	407-20		928		





Audi

ETKA

Model	Year	MG	SG	Illustration	Restrictions	UPD	19:25	11.08.2014
A6Q	2001	4	07	407-20		928		

Pos	Part Number	Description	Remark	Qty	Model
		drive shaft	front		
(1)	#4B0 407 451 AX	drive shaft with constant velocity joints	left 100MM	1	manual gearbox PR-M9L, MQ6, D1B
(1)	#4B0 407 451 AX	drive shaft with constant velocity joints	left 100MM	1	manual gearbox PR-T6V
(1)	#4B0 407 452 AX	drive shaft with constant velocity joints	right 100MM	1	manual gearbox PR-M9L, MQ6, D1B
(1)	#4B0 407 452 AX	drive shaft with constant velocity joints	right 100MM	1	manual gearbox PR-T6V
(1)	#8D0 407 452 EX	drive shaft with constant velocity joints F >> 4B-X-020 000*	left 100MM	1	manual gearbox PR-T7F, T7T
(1)	#8D0 407 452 EX	drive shaft with constant velocity joints F >> 4B-X-020 000*	left 100MM	1	manual gearbox PR-MJ8
(1)	#4B0 407 452 KX	drive shaft with constant velocity joints F >> 4B-X-020 000*	right 100MM	1	manual gearbox PR-T7F, T7T
(1)	#4B0 407 452 KX	drive shaft with constant velocity joints F >> 4B-X-020 000*	right 100MM	1	manual gearbox PR-MJ8
(1)	4B0 407 271 J	drive shaft with constant velocity joints	left 108MM	1	manual gearbox PR-T7Z
(1)	#4B0 407 451 BX	drive shaft with constant velocity joints	left 108MM	1	manual gearbox PR-T7Z
(1)	4B0 407 272 J	drive shaft with constant velocity joints	right 108MM	1	manual gearbox PR-T7Z
(1)	#4B0 407 452 BX	drive shaft with constant velocity joints	right 108MM	1	manual gearbox PR-T7Z



Audi

ETKA

Model	Year	MG	SG	Illustration	Restrictions	UPD	19:25	11.08.2014
A6Q	2001	4	07	407-20		928		

Pos	Part Number	Description	Remark	Qty	Model
(1)	>4B3 407 271 F	drive shaft with constant velocity joints	left	1	manual gearbox PR-T7S
(1)	#4B3 407 451 X	drive shaft with constant velocity joints	left	1	manual gearbox PR-T7S
(1)	>4B3 407 272 F	drive shaft with constant velocity joints	right	1	manual gearbox PR-T7S
(1)	#4B3 407 452 X	drive shaft with constant velocity joints	right	1	manual gearbox PR-T7S
2	4B0 407 271 C	drive shaft with constant velocity joints F 4B-X-020 001>>*	left	1	manual gearbox PR-T7F, T7T,
(2)	#4B0 407 451 CX	drive shaft with constant velocity joints F 4B-X-020 001>>*	left	1	manual gearbox PR-T7F, T7T
2	4B0 407 271 C	drive shaft with constant velocity joints F 4B-X-020 001>>*	left	1	manual gearbox PR-MJ8
(2)	#4B0 407 451 CX	drive shaft with constant velocity joints F 4B-X-020 001>>*	left	1	manual gearbox PR-MJ8
(2)	4B0 407 272 C	drive shaft with constant velocity joints F 4B-X-020 001>>*	right 130MM	1	manual gearbox PR-T7F, T7T
(2)	#4B0 407 452 CX	drive shaft with constant velocity joints F 4B-X-020 001>>*	right 130MM	1	manual gearbox PR-T7F, T7T
(2)	4B0 407 272 C	drive shaft with constant velocity joints F 4B-X-020 001>>*	right 130MM	1	manual gearbox PR-MJ8



Audi

ETKA

Model	Year	MG	SG	Illustration	Restrictions	UPD	19:25	11.08.2014
A6Q	2001	4	07	407-20		928		

Pos	Part Number	Description	Remark	Qty	Model
(2)	#4B0 407 452 CX	drive shaft with constant velocity joints F 4B-X-020 001>>*	right 130MM	1	manual gearbox PR-MJ8
(2)	4B0 407 271 C	drive shaft with constant velocity joints	left 130MM	1	manual gearbox PR-T6T, T5T
(2)	#4B0 407 451 CX	drive shaft with constant velocity joints	left 130MM	1	manual gearbox PR-T6T, T5T
(2)	4B0 407 272 C	drive shaft with constant velocity joints	right 130MM	1	manual gearbox PR-T6T, T5T
(2)	#4B0 407 452 CX	drive shaft with constant velocity joints	right 130MM	1	manual gearbox PR-T6T, T5T
(2)	4B0 407 271 F	drive shaft with constant velocity joints	left 130MM	1	automatic: PR-T7F, T7T, T5T, T6T
(2)	#4B0 407 451 GX	drive shaft with constant velocity joints	left 130MM	1	automatic: PR-T7F, T7T, T5T, T6T
(2)	4B0 407 272 F	drive shaft with constant velocity joints	right 130MM	1	automatic: PR-T7F, T7T, T5T, T6T
(2)	#4B0 407 452 GX	drive shaft with constant velocity joints	right 130MM	1	automatic: PR-T7F, T7T, T5T, T6T
(2)	4D0 407 272 S	drive shaft with constant velocity joints	left 130MM	1	automatic: PR-T7Z
(2)	#4D0 407 452 X	drive shaft with constant velocity joints	left 130MM	1	automatic: PR-T7Z
(2)	4D0 407 272 AF	drive shaft with constant velocity joints	right 130MM	1	automatic: PR-T7Z
(2)	#4D0 407 452 AX	drive shaft with constant velocity joints	right 130MM	1	automatic: PR-T7Z
(2)	4B3 407 271 G	drive shaft with constant velocity joints	left	1	automatic: PR-T7S
(2)	#4B3 407 451 AX	drive shaft with constant velocity joints	left	1	automatic: PR-T7S
(2)	4B3 407 272 H	drive shaft with constant velocity joints	right	1	automatic: PR-T7S
(2)	#4B3 407 452 AX	drive shaft with constant velocity joints	right	1	automatic: PR-T7S



Audi

ETKA

Model	Year	MG	SG	Illustration	Restrictions	UPD	19:25	11.08.2014
A6Q	2001	4	07	407-20		928		

Pos	Part Number	Description	Remark	Qty	Model
(3)	4B0 407 417 A	drive shaft with constant velocity joint inner F 4B-X-020 001>>	left	1	manual gearbox PR-T7F, T7T
(3)	4B0 407 417 A	drive shaft with constant velocity joint inner F 4B-X-020 001>>	left	1	manual gearbox PR-MJ8
(3)	4B0 407 418 A	drive shaft with constant velocity joint inner F 4B-X-020 001>>*	right	1	manual gearbox PR-T7F, T7T
(3)	4B0 407 418 A	drive shaft with constant velocity joint inner F 4B-X-020 001>>*	right	1	manual gearbox PR-MJ8
(3)	4B0 407 417 A	drive shaft with constant velocity joint inner	left	1	manual gearbox PR-T6T, T7Z, T5T
(3)	4B0 407 418 A	drive shaft with constant velocity joint inner	right	1	manual gearbox PR-T6T, T7Z, T5T
(3)	4B0 407 417 B	drive shaft with constant velocity joint inner	left	1	automatic: PR-T7F, T7T T5T, T6T
(3)	4B0 407 418 B	drive shaft with constant velocity joint inner	right	1	automatic: PR-T7F, T7T T5T, T6T
(3)	4D0 407 418 E	drive shaft with constant velocity joint inner	left	1	automatic: PR-T7Z
(3)	4D0 407 418 F	drive shaft with constant velocity joint inner	right	1	automatic: PR-T7Z
4	8D0 407 309	sealing plate	90MM	2	manual gearbox PR-T8B
(4)	8D0 407 309	sealing plate F >> 4B-X-020 000*	90MM	2	manual gearbox PR-T7F, T7T, T8B
(4)	* 8D0 407 309 A	sealing plate	94MM	2	manual gearbox PR-T7Z



Audi

# ETKA

Model	Year	MG	SG	Illustration	Restrictions	UPD	19:25	11.08.2014
A6Q	2001	4	07	407-20		928		

Pos	Part Number	Description	Remark	Qty	Model
5	443 407 357 A	spacer	8 MM	6	manual gearbox PR-T8B
(5)	443 407 357 A	spacer F >> 4B-X-020 000*	8 MM	2	manual gearbox PR-T7F, T7T, T8B
5	443 407 357 B	spacer	10 MM	6	manual gearbox PR-T7Z
6	N 906 682 01	socket head bolt with inner multipoint head	M10X48X26	12	
(6)	893 407 237	socket head bolt with inner multipoint head	M8X48	12	
7	N 904 411 02	socket head bolt with inner multipoint head	M10X20 tripodic	12	
(8)	N 012 374 1	securing ring	28X1,5	1	manual gearbox PR-T7Z
(8)	N 012 425 1	securing ring	25X1,2	1	automatic: PR-T7F, T7T, T4N; manual gearbox PR-T7F, T7T, T6W, T8B; automatic: PR-T1R
9	441 407 287	belleville spring		2	automatic: PR-T7F, T7T, T6T, T8B, T7Z; manual gearbox PR-T7F, T7T, T7Z, T8B
(10)	441 407 293	terminal	33	2	automatic: PR-T7F, T7T, T6T, T7Z; manual gearbox PR-T7F, T7T, T7Z, T8B
11	441 407 295	thrust ring		2	automatic: PR-T7F, T7T, T6T, T7Z; manual gearbox PR-T7F, T7T, T7Z, T8B



Audi

ETKA

Model	Year	MG	SG	Illustration	Restrictions	UPD	19:25	11.08.2014
A6Q	2001	4	07	407-20		928		

Pos	Part Number	Description	Remark	Qty	Model
(12)	441 407 297	securing ring	outer	2	automatic: PR-T7F, T7T, T6T; manual gearbox PR-T7F, T7T, T7Z, T8B
(13)	N 904 424 01	terminal	92X10X1	2	manual gearbox PR-T7F, T7T, T1R
(13)	N 904 682 02	clamp	107X9X0,75	2	automatic: PR-T7F, T7T, T6T, T7Z; manual gearbox PR-T7F, T7T, T7Z, T8B
14	N 102 077 01	clamp	34, 6X7X0,6	2	
15	N 906 601 01	hose clip	93, 5X7X0,6	2	
18	* 4A0 407 643 A	shouldered bolt	M16X1,5X77	2	PR-T7F, T7T, T6T, T7Z, T7S, T5T
18	4A0 407 643 A	shouldered bolt	M16X1,5X77	2	PR-MJ8
(18)	4B0 407 643	shouldered bolt	M14X1,5X73	1	sedan: PR-T7F, T6T, T7Z
(18)	4B0 407 643	shouldered bolt	M14X1,5X73	1	manual gearbox PR-M9L, MQ6
19	8D0 407 719	guard plate	left	1	manual gearbox PR-T7F, T5T T7Z, T7S, T7T, T6T; automatic: PR-T7F, T7T, T5T, T7Z, T6T;
19	4D0 407 720	guard plate	right	1	manual gearbox
(19)	4D0 407 722 E	guard plate	right	1	petrol engin automatic:
20	N 104 135 01	socket head bolt with hexagon socket head (combination)	M8X28	3	manual gearbox
20	N 904 154 05	socket head bolt with hexagon socket head (combination)	M8X22	3	automatic:
22	G 052 133 A2	high temperature grease	90G	X	



Audi

ETKA

Model	Year	MG	SG	Illustration	Restrictions	UPD	19:25	11.08.2014
A6Q	2001	4	07	407-20		928		

Pos	Part Number	Description	Remark	Qty	Model
(22)	G 052 133 A3	high temperature grease	120G	X	
(22)	G 052 186 A3	grease for triple roller joint	140G	X	
23	8D0 498 099 B	outer joint with rotor and assembly parts (HYTREL MANSCHETTE)		2	manual gearbox PR-MQ6,D1B, M9L
(23)	#8D0 498 099 BX	outer joint with rotor and assembly parts (HYTREL MANSCHETTE)		2	manual gearbox PR-MQ6,D1B, M9L
(23)	>8D0 498 099 B	outer joint with rotor and assembly parts (HYTREL MANSCHETTE)		2	manual gearbox PR-T6V
(23)	#8D0 498 099 BX	outer joint with rotor and assembly parts (HYTREL MANSCHETTE)		2	manual gearbox PR-T6V
(23)	8D0 498 099 C	outer joint with rotor and assembly parts to use for:	8D0 407 452 EX 8D0 407 272 AH 4B0 407 272 B	1	manual gearbox PR-T7F,T7T
		F >> 4B-X-020 000*			
(23)	#8D0 498 099 CX	outer joint with rotor and assembly parts to use for:	8D0 407 452 EX 8D0 407 272 AH 4B0 407 272 B	1	manual gearbox PR-T7F,T7T
		F >> 4B-X-020 000*			
(23)	8D0 498 099 C	outer joint with rotor and assembly parts to use for:	8D0 407 452 EX 8D0 407 272 AH 4B0 407 272 B	1	manual gearbox PR-MJ8
		F >> 4B-X-020 000*			
(23)	#8D0 498 099 CX	outer joint with rotor and assembly parts to use for:	8D0 407 452 EX 8D0 407 272 AH 4B0 407 272 B	1	manual gearbox PR-MJ8
		F >> 4B-X-020 000*			





Audi

ETKA

Model	Year	MG	SG	Illustration	Restrictions	UPD	19:25	11.08.2014
A6Q	2001	4	07	407-20		928		

Pos	Part Number	Description	Remark	Qty	Model
(23)	4D0 498 099	outer joint with rotor and assembly parts comprising: F 4B-X-020 000>>*		2	manual gearbox PR-T7F, T7T,
(23)	>4D0 498 099	outer joint with rotor and assembly parts comprising: F 4B-X-020 000>>*		2	manual gearbox PR-MJ8
(23)	#4D0 498 099 X	outer joint with rotor and assembly parts comprising: F 4B-X-020 000>>*		2	manual gearbox PR-T7F, T7T
(23)	#4D0 498 099 X	outer joint with rotor and assembly parts comprising: F 4B-X-020 000>>*		2	manual gearbox PR-MJ8
(23)	>4D0 498 099	outer joint with rotor and assembly parts		2	automatic: PR-T7F, T7T, T6T, T5T, T7S, T7Z; manual gearbox PR-T7Z, T7S, T6T, T5T
(23)	#4D0 498 099 X	outer joint with rotor and assembly parts		2	automatic: PR-T7F, T7T, T6T, T5T, T7S, T7Z; manual gearbox PR-T7Z, T7S, T6T, T5T
(24)	8D0 498 103 A	constant velocity joint with boot, attachment parts and grease	inner	1	manual gearbox PR-T6T, M9L, MQ6, D1B, T6V
(24)	#8D0 498 103 AX	constant velocity joint with boot, attachment parts and grease	inner	1	manual gearbox PR-T6T, M9L, MQ6, D1B, T6V



Audi

ETKA

Model	Year	MG	SG	Illustration	Restrictions	UPD	19:25	11.08.2014
A6Q	2001	4	07	407-20		928		

Pos	Part Number	Description	Remark	Qty	Model
(24)	8D0 498 103 A	constant velocity joint with boot, attachment parts and grease F >> 4B-X-020 000*	inner	1	manual gearbox PR-T7F, T7T
(24)	3D0 498 103 B	constant velocity joint with boot, attachment parts and grease F 4B-X-020 001>>*	inner	1	manual gearbox PR-T7F, T7T
(24)	#3D0 498 103 BX	constant velocity joint with boot, attachment parts and grease F 4B-X-020 001>>*	inner	1	manual gearbox PR-T7F, T7T
(24)	>8D0 498 103 A	constant velocity joint with boot, attachment parts and grease F >> 4B-X-020 000*	inner	1	manual gearbox PR-MJ8
(24)	#8D0 498 103 AX	constant velocity joint with boot, attachment parts and grease F >> 4B-X-020 000*	inner	1	manual gearbox PR-T7F, T7T
(24)	#8D0 498 103 AX	constant velocity joint with boot, attachment parts and grease F >> 4B-X-020 000*	inner	1	manual gearbox PR-MJ8
(24)	4D0 598 103	constant velocity joint with boot, attachment parts and grease	inner	2	manual gearbox PR-T7Z, T7S
(24)		constant velocity joint with boot, attachment parts and grease please choose from item: F >> 4B-X-080 000*	inner 3		automatic: PR-T7S
(24)	>4B0 498 103	constant velocity joint with boot, attachment parts and grease F 4B-X-080 001>>*	inner tripodic	2	automatic: PR-T7S



Audi

ETKA

Model	Year	MG	SG	Illustration	Restrictions	UPD	19:25	11.08.2014
A6Q	2001	4	07	407-20		928		

Pos	Part Number	Description	Remark	Qty	Model
(24)	#4B0 498 103 X	constant velocity joint with boot, attachment parts and grease F 4B-X-080 001>>*	inner tripodic	2	automatic: PR-T7S
25	443 498 201 A	joint protective boot with assembly items and grease	inner	2	manual gearbox PR-T6T, M9L, MQ6, D1B
(25)	443 498 201 A	joint protective boot with assembly items and grease F >> 4B-X-020 000*	inner	2	manual gearbox PR-T7F, T7T
(25)	443 498 201 A	joint protective boot with assembly items and grease F >> 4B-X-020 000*	inner	2	manual gearbox PR-MJ8
(25)	443 498 201 B	joint protective boot with assembly items and grease	inner	2	manual gearbox PR-T7Z, T7S
(26)	4B0 498 201	joint protective boot with assembly items and grease	inner tripodic	2	
(26)	8E0 498 201 B	joint protective boot with assembly items and grease	inner tripodic	2	automatic: PR-T7S
27	3B0 498 203 A	joint protective boot with assembly items and grease	outer	2	automatic: PR-T8B; manual gearbox PR-T6V, T5Z, T6W
(27)	3B0 498 203 A	joint protective boot with assembly items and grease	outer	2	manual gearbox PR-M9L, MQ6
(27)	441 498 203 A	joint protective boot with assembly items and grease	outer	2	automatic: PR-T7F, T7T, T6T, T7Z, T7S T5T manual gearbox PR-T7F, T7T, T7Z, T5T, T7S, T6T
(27)	441 498 203 A	joint protective boot with assembly items and grease	outer	2	manual gearbox PR-MJ8